

MULLER

AUTOMOTIVE



GEOPODS

WIRELESS MAGNETIC 3D WHEEL ALIGNMENT

a safer and cleaner road

GEOPODS

SPACE SAVING / TIME SAVING / PLUG & PLAY

The compact, mobile, wireless 3D solution for fast and precise wheel alignment, with no installation required - ideal when every square meter of workshop space matters.



SPACE SAVING = An optimised workshop thanks to an ultra-compact system

- **No cabinet, no fixed columns** in front of or around the lift
- **Wall storage** for sensors and 3-point clamps + integrated charging

GEOPODS was designed for workshops where space is limited. No furniture around the lift, no front columns or beams: the working area remains clear. **Result** : you can equip your workshop with 3D wheel alignment even in a compact space.

For larger workshops, the front of the lift remains free to position a headlamp tester or any other equipment according to your needs.

Wall mounts are included in the package, allowing PODS and 3-point clamps to be stored in one single location. The workshop stays tidy, and the equipment is always quickly accessible.

PLUG & PLAY = No time wasted

- **No cabling** : Unpack, Attach, Measure
- **No calibration**

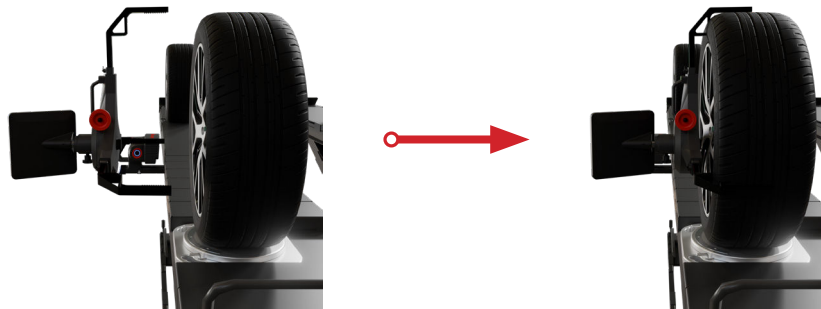
From the moment it arrives in the workshop, **GEOPODS** is deployed with disarming simplicity. You unpack it, position the components, and start the measurement: the solution has been designed to eliminate the steps that usually slow down commissioning.

And this advantage is not limited to delivery day.

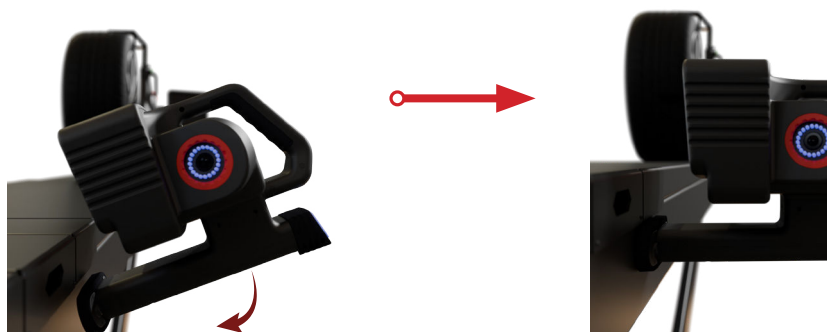
In everyday use, each operation is carried out with the same speed: a smooth, repeatable setup that allows immediate work on every vehicle. **The result:** intuitive utilisation, a team that becomes quickly autonomous, and equipment that is truly put to use ... without any loss of time, service after service.

4 self-centering, 3-point clamps

- **No contact with the rim** : The clamps grip the tire, avoiding any contact with the rim. This protects aluminum, painted, or fragile rims while ensuring fast and stable attachment.
- **Self-centering** : the clamps naturally position themselves at the center of the wheel → immediate and accurate alignment.
- **Torque limiter** : constant tightening torque → secure fastening without overtightening.

**2 magnetized measurement units**

- **Direct positioning on lift runways** : magnetic fixation + weight stability
- **Compatible with 4-post lifts and drive-on lifts**
- **Clear line of sight** between camera and targets **on 4-post lifts**
- **Automatic target recognition and visualization**
- **Automatic self-calibration** between measurement heads



TIME SAVING = Productivity first :

- **Complete international vehicle database**
- Results **in under 30 seconds**
- **Ultra-fast data acquisition** thanks to a smoother workflow

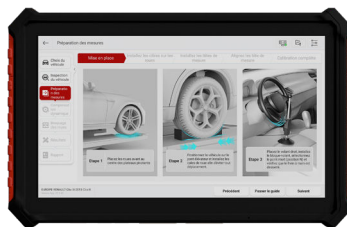
GEOPODS is designed to save time at every stage of a wheel alignment service, starting with setup. Installation is almost immediate: the operator deploys the equipment, positions the components, and can start right away — eliminating long and unproductive preparation phases.

Once in operation, the system guides the operator with a smooth workflow and clear real-time information, simplifying handling, reducing hesitation, and minimizing errors or repositioning.

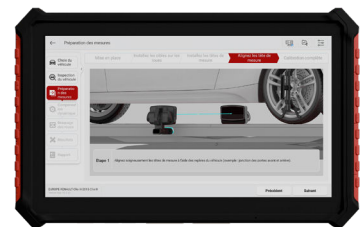
Result: faster transition from measurement to adjustment, then final validation — with a complete report generated in under 30 seconds, enabling efficient vehicle throughput and turning wheel alignment into a truly profitable daily service.



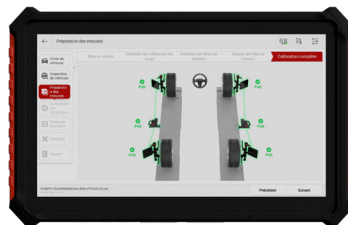
Cover page



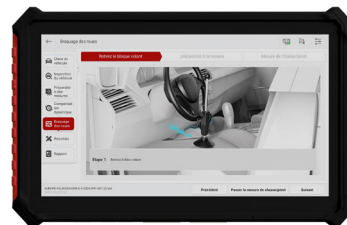
Preparations before measurement



Connection of measurement units



Target recognition



Assistance before runout compensation



Runout compensation phase



Global measurement page



Preparations before measurement

MOBILITY = from lift to lift or garage to garage

GEOPODS is mobile and can be moved from one lift to another without adapters (magnetic fixation, no mounting) : *you can share the equipment between several workstations and optimize its utilisation rate.*

Thanks to its transport case, *you can deploy wheel alignment wherever and whenever needed, and even consider **multi-site sharing**.*

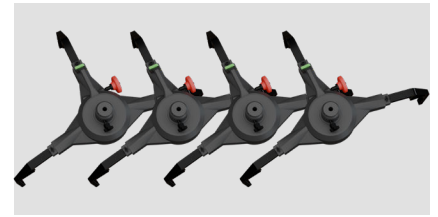
Accessories included



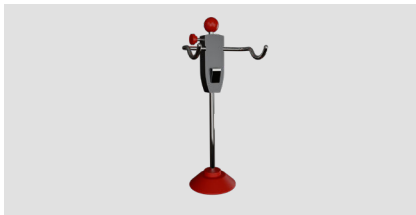
Set of 2 turntables



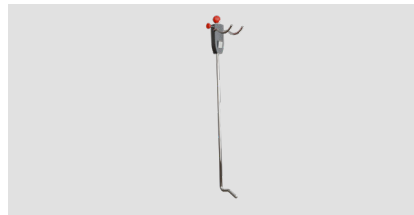
Set of 4 targets



Set of 4 self-centering 3-point clamps



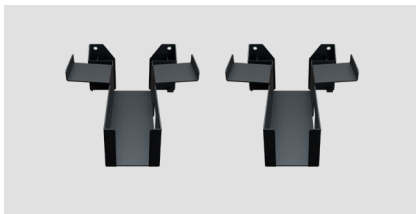
Steering wheel holder



Brake pedal depressor



13" tablet



Wall mounts for GEOPODS



Transport case for PODS



Set of 2 magnetic PODS

Optional accessories



Mobile cabinet

Technical specifications

Toe	± 20°
Camber	± 10°
Caster	± 20°
Kingpin inclination	± 20°
Maximum steering angle	± 35°
Wheelbase	1940 - 4600 mm
Track width	1290 - 1900 mm
Wheel diameter	11" - 30"

Parameters

GEOPODS charging time	4 h
Measurement autonomy	10 h
Tablet	13" - Android 10
Charging voltage	230V 1ph 50 Hz
Number of packages	2
Weight	60 kg
Dimensions	735 (W) x 900 (L) x 840 (H) mm

MULLER AUTOMOTIVE **GEOPODS** 3D wheel alignment on drive-on lift FOG **GALAXIE551ELA**



MULLER AUTOMOTIVE **GEOPODS** 3D wheel alignment on 4-post lift FOG - **QUADRA5xxLA**



MULLER
AUTOMOTIVE

8, rue Réaumur
Jardin d'Entreprise
28000 CHARTRES
Tél: 02 37 33 34 00
Mail: adv@mullerautomotive.fr