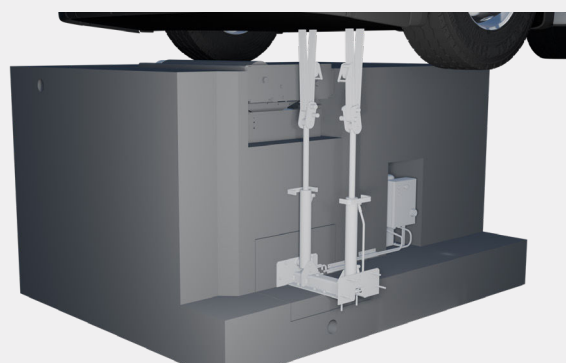


53400

PULLING LOAD SIMULATOR



TECHNICAL DATA	53400
Cylinders	2 x Ø70
Stroke	400 mm
Power supply	2,2 kW (400 V 50 Hz)
Average clearance between cylinders	410 mm
Strap safety coefficient	2
Strap	EN 12195-2 Standard
Minimum concrete dimensions in anchorage area	150 x 500 x 800 mm
Pit width	From 59 to 79 mm (under axle)

The 53400 traction load simulator enables you to measure the efficiency of a brake tester equipped with this option, by applying a vertical force from top to bottom.

The purpose of load simulation is to provide the necessary adhesion between the wheels and rollers of the brake tester, in order to get as close as possible to the maximum real values.

This device is suitable for all pit widths between 590 and 790 mm.

54700

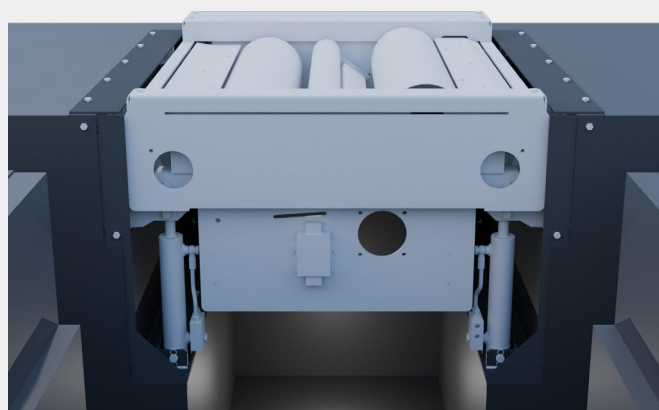
LIFTING LOAD SIMULATOR FOR 44700 BRAKE TESTER



54750

LIFTING LOAD SIMULATOR FOR 44750 WIDE BRAKE TESTER

TECHNICAL DATA	54700 / 54750
Lifting capacity per axle	12 000 kg
Capacity in lowest position	20 000 kg
Lifting stroke	250 mm
Lifting / lowering time	18 sec.
Operating pressure	130 bars
Max. pressure	150 bars
Hydraulic cylinders	8 cylinders, double-acting
Minimum / Maximum track	800 mm - 2800 mm



The 54700 or 54750 load simulator is used to lift the axle of a multi-axle vehicle (tractors or tandem trailers), while simultaneously lifting the brake tester. As a result, the axles not on the brake tester will not touch the ground or almost.

In this way, the axle on the brake tester supports all or part of the weight of the other axles. The simulator allows you to test the brakes in the high position, but also in the low position, and even in the intermediate position.

The simulator is equipped with a hydraulic power unit which powers the 8 cylinders of the 2 frames by means of a hydraulic synchronization device.