

# AGILA234EH



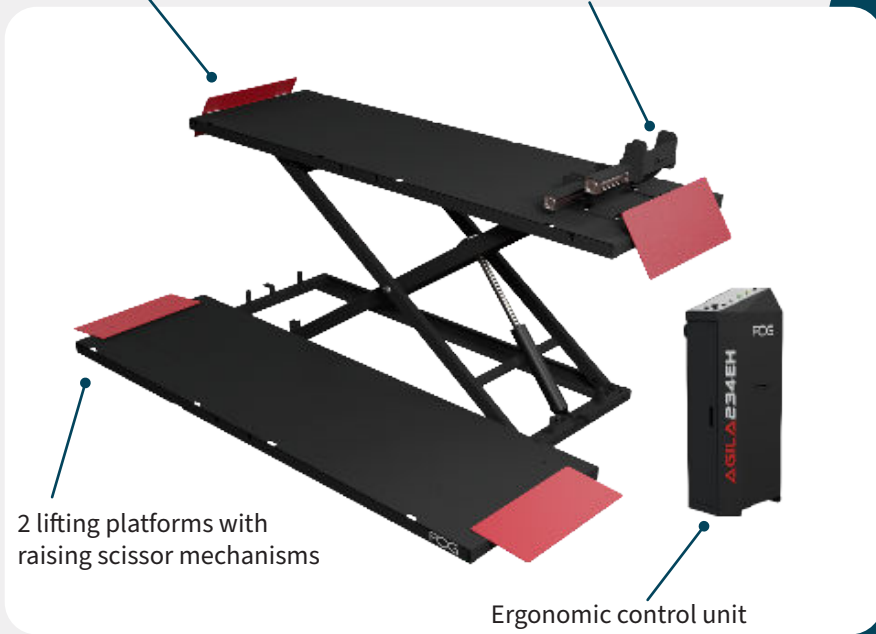
DOUBLE LIFTING PLATFORM, FOR 2, 3, 4 WHEELERS VEHICLES,  
FOR VEHICLE INSPECTION - **VEHICLES CATEGORY L**

Drop down inspection rear plate

Wheel clamp

2 lifting platforms with raising scissor mechanisms

Ergonomic control unit



This double scissor lifting platform, meets the requirements for vehicle inspection of vehicles (2, 3 and 4 wheelers, such as motorbikes, side-cars, quads...).

One advantage of this double platform lift is provided by the fact it can accommodate the full range of vehicles (2, 3 and 4 wheelers).

Its innovative design offers a full access to the vehicle all around the lift, whichever type of vehicle has been raised.



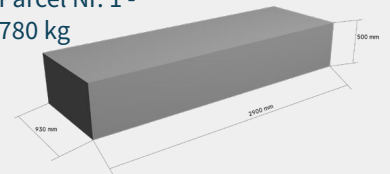
## GENERAL SPECIFICATIONS

## AGILA234EH

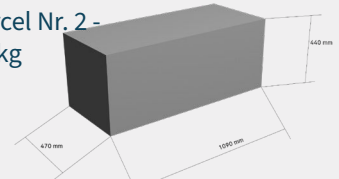
Lifting capacity (single platform mode)	860 kg
Lifting capacity (double platform mode)	1500 kg
Platform length	2800 mm
Overall width of the lift	1700 mm
Lifting time/lowering time	25 sec. / 30 sec.
Max. Oil pressure	250 bars
Air supply (for the wheel clamp supply)	6 - 8 bars
Power supply - E-motor power	400 V / 3 ph / 50 Hz / 3,5 kW
Net weight	860 kg
Conformity to standard	CE

## PACKAGING

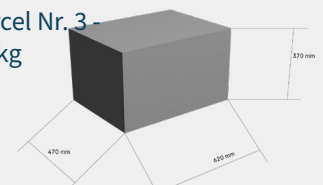
Parcel Nr. 1 -  
780 kg



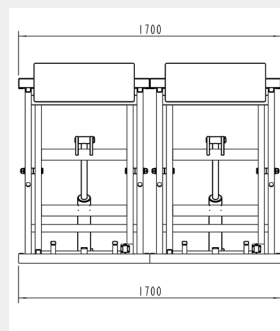
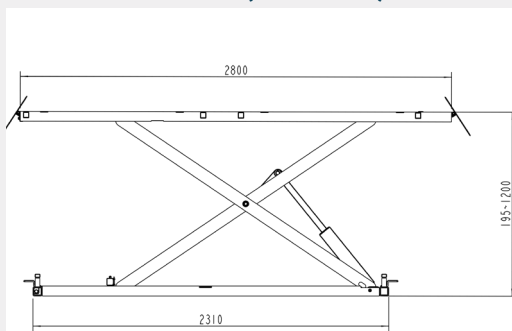
Parcel Nr. 2 -  
75 kg



Parcel Nr. 3 -  
25 kg



## DIMENSIONS (IN MM)

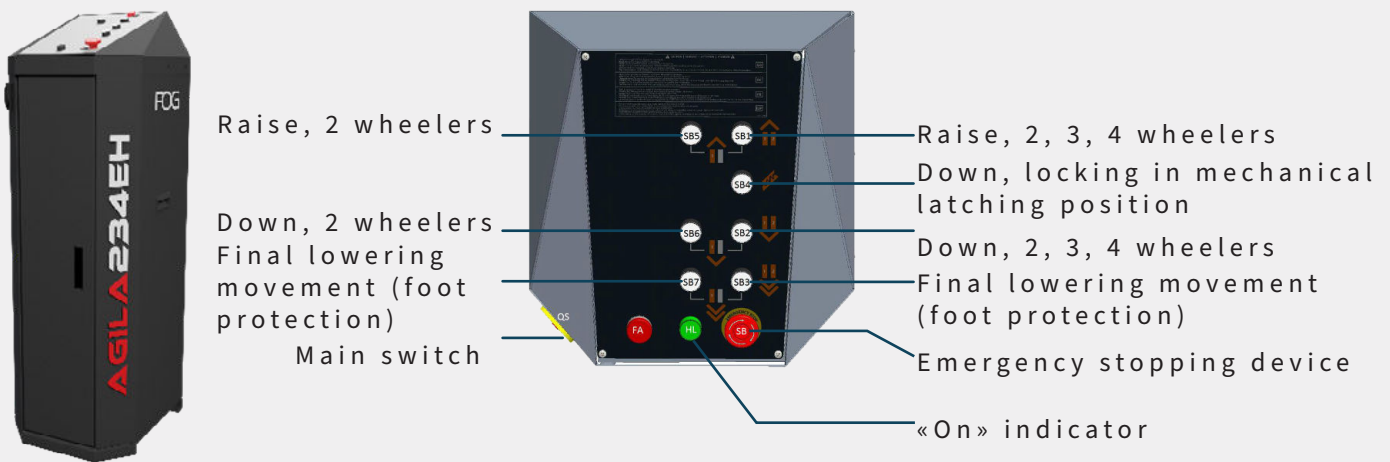


The lift is suitable for all vehicles covered in the «category L»:

- 2 wheelers : Motorcycles, scooters, moped...
- 3 wheelers : MP3, Trikes, can-am, side-cars...
- 4 wheelers : quads, buggies, cart, small cars...



Control box, user-friendly, with control panel located at ideal height. All controls don't require any physical effort (only push buttons), with functions that are logical



The lifting platforms are equipped with safety latching device, with automatic locking function, and lowering phase in two steps for foot protection, in accordance with European standards.

STANDARD EQUIPMENT	AGILA234EH
Electro-hydraulic drive system with power unit located in the command unit	standard
2 lifting platforms, working independently or synchronized. Scissor lifting mechanisms.	standard
4 drive-in/out ramps, with automatic «wheel stopper» function, once lift has raised	standard
Oil hoses length for max. distance 2 meters between lift and command unit	standard
Removable pneumatic wheel clamp, with remote command pedal, easy to be activated, even for a user riding a motorbike	standard
OPTIONAL EQUIPMENTS	REFERENCES
Jacking beam 500 kg	TRAV1M
Set of 2 long drive-in/out ramps, with oil hoses covers, for above ground installation of lift (without pit)	A5R