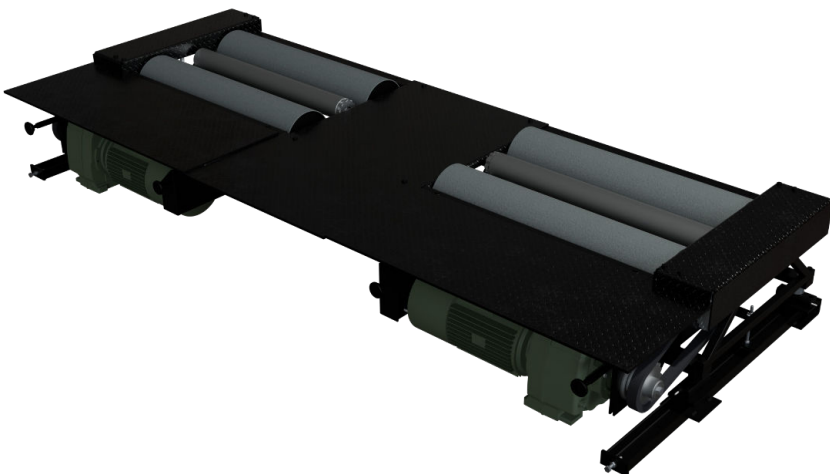


44803

15T STANDARD MONOBLOC BRAKE TESTER



This heavy-duty bench with an axle-load capacity of 15 tonnes is mainly intended for the international markets.

Optionally equipped with 15 kW brake motors, it is also available in a two-speed version.

As part of a mixed line, it can be used to test light vehicles. As an optional feature, it can be fitted with a pneumatic exit kit to facilitate the ejection of light vehicles.

Thanks to its design - with the motors adjacent to the rollers - it requires a pit height of only 420 mm.

TECHNICAL DATA	44803
Axle load	15 000 kg
Roller diameter	250 mm
Minimum / Maximum clearance	800 / 2 800 mm
Test speed	2,2 km/h
Brake motors (exit help)	2 x 11 kW
Maximum braking forces	2 x 4 000 daN
Adhesion coefficient	dry > 0,7 / wet > 0,6
Raised rear rollers	no
Clearance between frames	500 mm
Two-speed management	optional

PACKAGING

Parcel -
850 kg

