

# 43850

WIDE FLAT MONOBLOC PAINTED CHASSIS

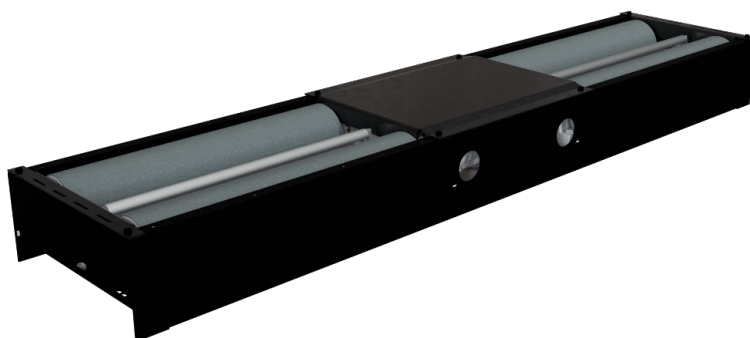


# 43850-Z

WIDE FLAT MONOBLOC ZINC PLATED CHASSIS

The 43850 braking bench allows vehicles with 'WIDE' axle (motor home type) to pass through.

The rollers are automatically blocked to facilitate vehicle exit. The roller coating provides maximum grip in both dry and wet weather conditions.



TECHNICAL DATA	43850	43850-Z
Finishing	Painted chassis	Zinc plated chassis
Dimension	2 920 x 650 x 280 mm	
Weight	515 kg	
Minimum / Maximum clearance	800 / 2 800 mm	
Axle loaded	4 000 kg	
Roller diameter	> 200 mm	
Roller length	983 mm	
Maximum braking force	2 x 900 daN at speed 4,3 km/h	
Motors power	2 x 4,7 kW	
Roller coating	Epoxy / Silica	
Adhesion coefficient	dry > 0,8 / wet > 0,6	
Raised rear rollers	0 mm	

## PACKAGING

Parcel - 520 kg

