

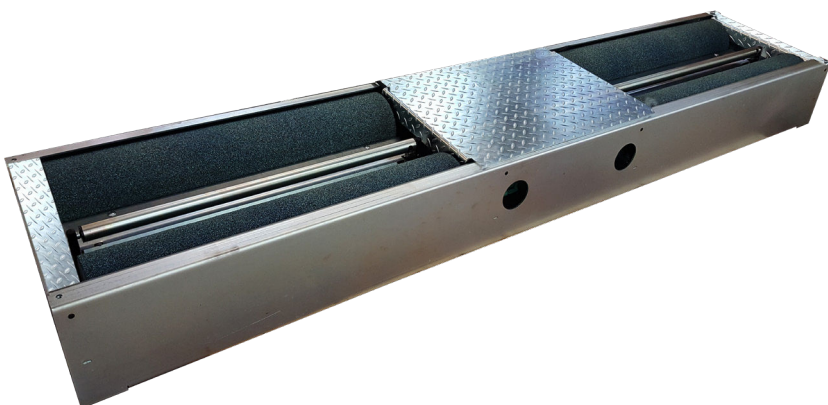
43800

STANDARD FLAT MONOBLOC PAINTED CHASSIS



43800-Z

STANDARD FLAT MONOBLOC ZINC PLATED CHASSIS



*zinc plated chassis

Designed with a reinforced 4T structure, the 43800 bench allows overloaded vehicles to pass through.

Like all the other braking benches in the range, the rollers are automatically locked by electromagnetic braking to facilitate vehicle exit.

TECHNICAL DATA	43800	43800-Z
Finishing	Painted chassis	Zinc plated chassis
Dimension	2 320 x 650 x 280 mm	
Weight	410 kg	
Minimum / Maximum clearance	800 / 2 270 mm	
Axle loaded	4 000 kg	
Roller diameter	> 200 mm	
Maximum braking force	2 x 750 daN at speed 5,5 km/h	
Motors power	2 x 4,7 kW	
Roller coating	Epoxy / Silica	
Adhesion coefficient	dry > 0,8 / wet > 0,6	
Raised rear rollers	0 mm	

PACKAGING

Parcel - 520 kg

