

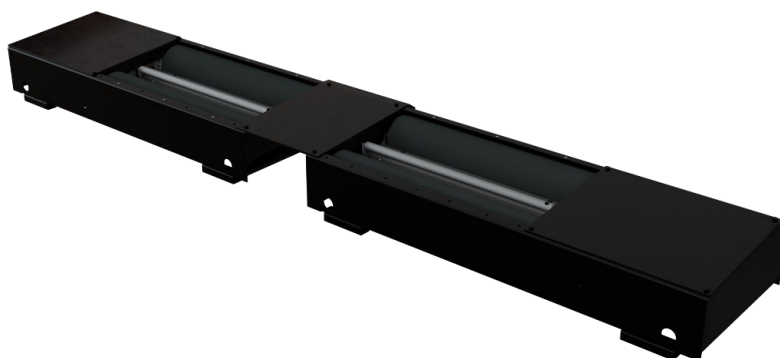
43350BB

WIDE BIBLOC PAINTED CHASSIS



The 43350 bibloc brake bench is derived from the 43350 monobloc bench. Its main advantage is that it adapts to all clear-space configurations.

Depending on the track configuration chosen, the bibloc bench can accommodate vehicles with a minimum width of up to 130 mm and a maximum width of up to 2,800 mm.



TECHNICAL DATA

43350BB

Finishing	painting chassis
Dimension	1 785 x 650 x 285/335 mm
Weight	530 kg
Minimum / Maximum clearance	130 mm / 2 800 mm
Axle load	4 000 kg
Roller diameter	> 200 mm
Roller length	983 mm
Maximum braking force	2 x 900 daN at speed 4,3 km/h
Motors power	2 x 4,7 kW
Roller coating	Epoxy / Silica
Adhesion coefficient	dry > 0,8 / wet > 0,6
Raised rear rollers	+ 35 mm

OPTION

Ref. 100460-MUX Weighing sensor KIT

PACKAGING

2 x Parcel - 250 kg

