

43300

STANDARD MONOBLOC PAINTED CHASSIS

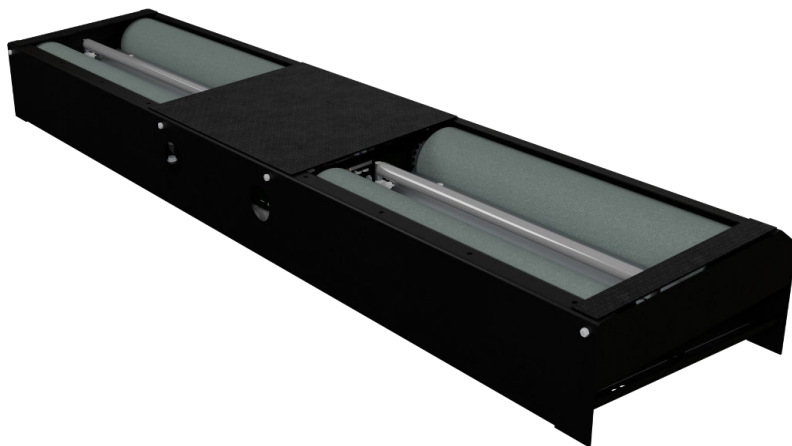


43300-Z

STANDARD MONOBLOC ZINC PLATED CHASSIS

This brake tester complies with the main international standards :

- **Performance** : the rear rollers are raised by 35 mm to increase braking forces and prevent vehicle ejection when maximum braking effort is reached.
- **Reliability** : this bench has a high axle load and powerful motors to minimise wear
- **User-friendliness** : it has a motor with an electro-magnetic brake to make it easier to remove the vehicle once the axle check has been completed



*zinc plated chassis

TECHNICAL DATA	43300	43300-Z
Finishing	painting chassis	zinc plated chassis
Dimension	2 320 x 650 x 285/335 mm	
Weight	420 kg	
Minimum / Maximum clearance	800 / 2 270 mm	
Axle load capacity	4 000 kg	
Roller diameter	> 200 mm	
Maximum braking force	2 x 750 daN at speed 5,5 km/h	
Motors power	2 x 4,7 kW	
Roller coating	Epoxy / Silica	
Adhesion coefficient	dry > 0,8 / wet > 0,6	
Raised rear rollers	+ 35 mm	

SAFETY

To prevent the motors from accidentally starting outside the control phases, the safety of the control rollers is ensured by disconnection via microswitches connected to the safety board.

OPTION

Ref. 100460-MUX Weighing sensor KIT

Ref. 100519-2VD Wide track kit

PACKAGING

Parcel - 522 kg

