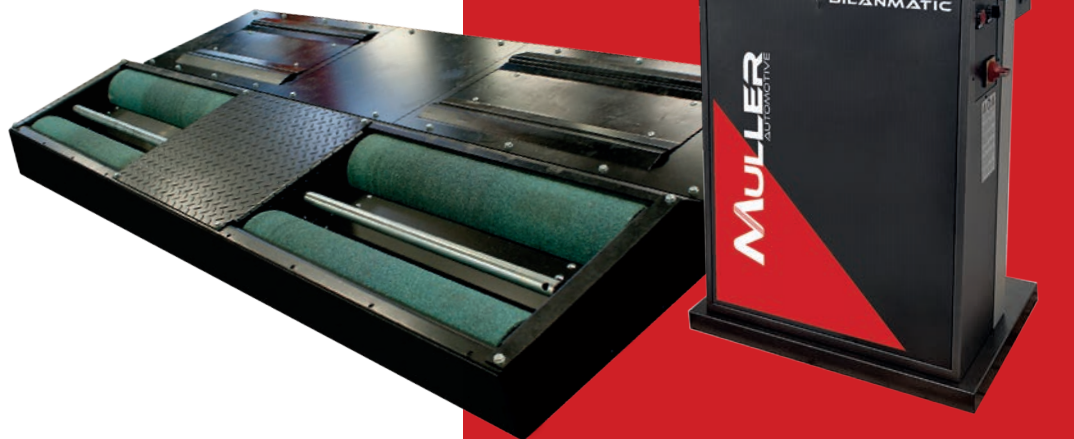


TEST LANE



THE COMMUNICATING TEST LANE BILANMATIC XG VL



BILANMATIC XG INSPECTION LANE MULTIPLEXED INSPECTION LANE

MULLER AUTOMOTIVE® now introduces the BilanMatic XG technical inspection lane.

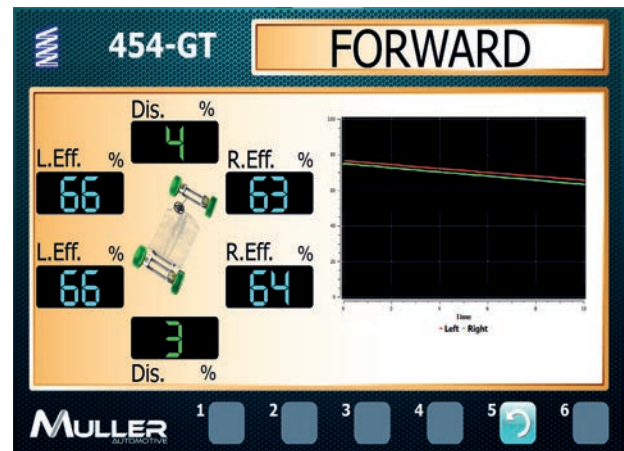
Keeping the reliability and performance characteristics of its predecessors, the BilanMatic XG offers a vehicle inspection centers with communicating hardware, that centralises in real-time the data collected by the Vehicle inspection equipment.

Our multiplexed system helps improve the reliability and develops the performance of your inspection lane:

- Remote maintenance: for instant remote assistance with your equipment
- Simplified electronics: simple and rapid equipment maintenance and upgrades
- All digital system: greater measurement accuracy and result reliability
- Design: console designed to work under restrictive conditions, while making your center attractive

HIGH TECHNOLOGY

The BilanMatic XG is driven by ergonomic, intuitive and straightforward software. The operator is guided throughout the inspection.



- Compliant with and adaptable to local regulations;
- New-design console;
- 27" HD tilt-swivel monitor;
- Multilingual interface (German, English, Spanish, French, Portuguese, Turkish, Vietnamese, Thai, etc.);
- Specific procedures for new vehicles;
- 4WD vehicle inspection program;
- Wireless pedometer;
- Measurement and digital communication via multiplexed acquisition module for reliable measurements;
- Connection to the ASA LIVESTREAM, GIEGLAN and OTCLAN protocols;
- Secure console (emergency stop palm button, reset button, maintenance code).



BILANMATIC XG LIGHT VEHICLES INSPECTION LANE

SIDE SLIP TESTER WITH RELEASE

Range AM10000RMX (44100-D for Vietnam)

The side slip tester connected to the inspection chain measures front and rear wheel side slip and diagnoses vehicle drift. It allows precise and repeated measurements thanks to its length and release plate. Measurements are acquired digitally and communicated via the multiplexed acquisition module. This guarantees reliable measurement transmission and eliminates interference. The side slip tester includes an optical vehicle passage detector for improved durability

CHARACTERISTICS

Uncoated tester dimensions	600 x 1020 x 35 mm
Travel	+ / - 17 mm
Measurement range	+ / - 20 m/km
Axle load capacity	4 t
Plate coating	Mat with rubber studs



SUSPENSION BENCH

Range AM46600 / AM55900 / AM55950 LARGE

These suspension asymmetry benches use the EUSAMA method. They guarantee excellent measurement repeatability and fine analysis of the vehicle's left and right side damping measurement. These suspension benches can accommodate vehicles of 3.5 t (AM55900 / 55950) and 4 t (AM46600) at the axle in static mode and of 2.5 t in dynamic measurement mode. Their high-power motors prevent slip and limit premature drive belt wear. These benches are available in zinc-plated finish.



CHARACTERISTICS	AM46600 	AM55900	AM55950 LARGE 
Dimensions of the tester (L x l x h)	2 300 x 600 x 280 mm	2 320 x 600 x 280 mm	2 920 x 600 x 280 mm
Weight	300 kg	280 kg	320 kg
Min. / Max. Track	800 / 2 100 mm	800 / 2 200 mm	800 / 2 500 mm
Passage capacity	4 t	3.5 t	3.5 t
Weighing capacity (axle)	3 000 daN	3 000 daN	3 000 daN
Dynamic test capacity	2500 daN	2 500 daN	2 500 daN
Amplitude of excitation	+ / - 3 mm	+ / - 3 mm	+ / - 3 mm
Measurement method	EUSAMA	EUSAMA / EXPERT	EUSAMA / EXPERT
Electric motor	3 kW	2.2 kW	2.2 kW

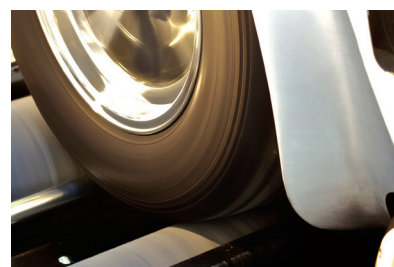
MONOBLOC BRAKE BENCH

Range AM43300 (43300 for Vietnam) / AM43800



Our best-seller throughout the world, this brake tester is in accordance with the main international standards.

- **Performance** : Thanks to its large passage dimensions, it can test from the smallest car to a motor home.
- **Reliability**: This bench possesses a high axle load and powerful motors to minimise wear. Available in zinc-plated finish.
- **Usability**: The bench possesses motors with electromagnetic brakes



CHARACTERISTICS	AM43300	AM43800
Dimensions of the tester (L x l x h)	2 320 x 650 x 285/335 mm	2 320 x 650 x 280 mm
Weight of tester	420 kg	410 kg
Min. / Max. Track	800 / 2 270 mm	800 / 2 270 mm
Axle load	4 t	4 t
Roll diameter	200 mm	200 mm
Max. braking force	2 x 750 daN at 5.5km/h	2 x 750 daN at 5.5km/h
Electrical braked motors	2 x 4.7 kW	2 x 4.7 kW
Roll coating	Epoxy / Silica	Epoxy / Silica
Adhesion coefficient	dry > 0.7; wet > 0.6	dry > 0.7; wet > 0.6
Elevated rear rollers	+ 35 mm	0 mm

WIDE BRAKE TESTER

Range AM43350 / AM43850



In some countries, motor home type vehicles are inspected according to the same requirements as light vehicles. In order to be able to handle these “wide track” vehicles, MULLER AUTOMOTIVE® has developed a wider monobloc brake bench to accommodate these vehicles. Available in zinc-plated finish too.

CHARACTERISTICS	AM43350	AM43850
Dimensions of the tester(L x l x h)	2 920 x 650 x 285/335 mm	2 920 x 650 x 280 mm
Weight of tester	530 kg	515 kg
Min. / Max. Track	800 / 2 800 mm	800 / 2 800 mm
Axle load	4 t	4 t
Roll diameter	> 200 mm	> 200 mm
Max. braking force	2 x 900 daN at 4.3km/h	2 x 900 daN at 4.3km/h
Electrical braked motors	2 x 4.7 kW	2 x 4.7 kW
Roll coating	Epoxy / Silica	Epoxy / Silica
Adherence coefficient	dry > 0.7; wet > 0.6	dry > 0.7; wet > 0.6
Raised rear rollers	+ 35 mm	0 mm

BIBLOC BRAKE TESTER

Range AM43350-B / AM43850-B

MULLER AUTOMOTIVE® designs and manufactures bibloc brake testers.

- **Services:** this bench's "minimum passage", i.e. the distance between two benches, can be adapted to allow vehicles such as quad bikes and trikes to be tested.
- **Ergonomics:** the bibloc system avoids the need for numerous wheel-by-wheel passages. The rollers lock automatically to facilitate vehicle exit from the bench.
- **Reliability and safety:** the rear rollers can be raised to prevent the vehicle from being ejected during the test and to increase the maximum braking forces. The motors are braked as standard to avoid vehicle damage on exit. These benches are available in zinc-plated finish too.

CHARACTERISTICS	AM43350-B	AM43850-B
Dimensions of the tester (L x W x H)	1 785 x 650 x 285/335 mm	1 785 x 650 x 280 mm
Weight of tester	530 kg	515 kg
Min. / Max. Track, Imp. Compact	130 / 2 140 mm	130 / 2 140 mm
Imp. Standard	490 / 2500 mm	490 / 2500 mm
Imp. Wide	800 / 2 800 mm	800 / 2 800 mm
Axle load	4 t	4 t
Roll diameter	> 200 mm	> 200 mm
Length of rollers	983 mm	983 mm
Max. braking force	2 x 900 daN at 4.3km/h	2 x 900 daN at 4.3km/h
Electrical braked motors	2 x 4.7 kW	2 x 4.7 kW
Roll coating	Epoxy / Silica	Epoxy / Silica
Adhesion coefficient	dry > 0.7; wet > 0.6	dry > 0.7; wet > 0.6
Elevated rear rollers	+ 35 mm	0 mm

Thanks to our extensive range of brake testers, MULLER AUTOMOTIVE ® offers numerous solutions that can be adapted to your specific requirements.

In particular, a light vehicle inspection lane can be combined with a brake tester for motorcycles

AXLE PLAY DETECTOR

Range AM56100 / AM56110 / AM56120 / 46100 for Vietnam

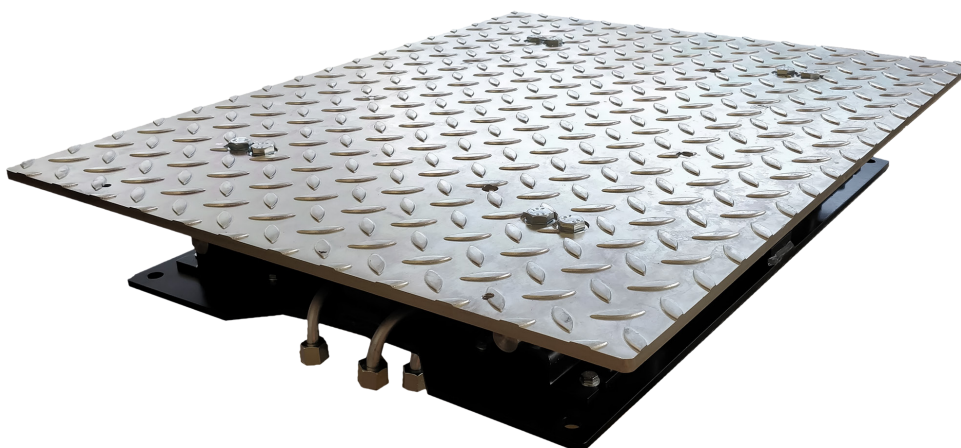
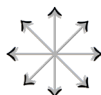
Our hydraulic light vehicle axle play detector apply mechanical stress to the wheel to test the various steering elements and to check on liquid leaks.

Plate movement is controlled according to transverse, longitudinal and diagonal movements by means of a wired control handset fitted with an LED lamp.

The shape of the plates provides a better wheel handling. The electrophoretic coating treatment of all metal parts protects the plates from corrosion.

The plates can be flush-mounted, with civil engineering, or free-standing (access ramps provided). They operate independently of each other.

Movements in 4 orientations (and 8 directions).



CHARACTERISTICS	AM56100-A	AM56110-A
Installation	Recessed	On ground
Axle load	3 t	3 t
Net dimensions per plate	630 x 240 mm	630 x 240 mm
Overall dimension	720 x 550 x 165 mm	720 x 550 x 127 mm
Transverse travel	80 mm	80 mm
Longitudinal travel	80 mm	80 mm
Thrust force	1060 daN	1060 daN
Operating pressure	150 bars	150 bars
Motor power output	2.2 kW	2.2 kW

SPEEDOMETER

Range AM46300-1MUX

This speedometer developed by MULLER AUTOMOTIVE® can measure vehicle speed (odometer), but also check the distance covered (taximeter). It can be set for two uses:

- Speedometer: measures the speed displayed on the vehicle's meter.
- Taximeter: checks the meter/wheel speed to verify a taxi fares.

This bench is fitted with an axle lifting system to facilitate vehicle exit. It is available in a motorised version for vehicles with a meter linked to a non-driving axle.



CHARACTERISTICS

Pit dimension (L x l x h)	2 500 x 680 x 280 mm
Maximum axle load	3 t
Minimum track	780 mm
Maximum track	2200 mm
Distance between rollers	370 mm
Roller diameter	Ø 200 mm
Rim diameter	10 - 18 inches
Roller blocking max bench speed	8 brake pads
Max. speed :	
<i>Motorised version AM46310-M</i>	80 km/h
<i>Non-motorised version AM46310</i>	90 km/h (simple balancing) 160 km/h (high performance balancing)

BLUETOOTH PEDOMETER

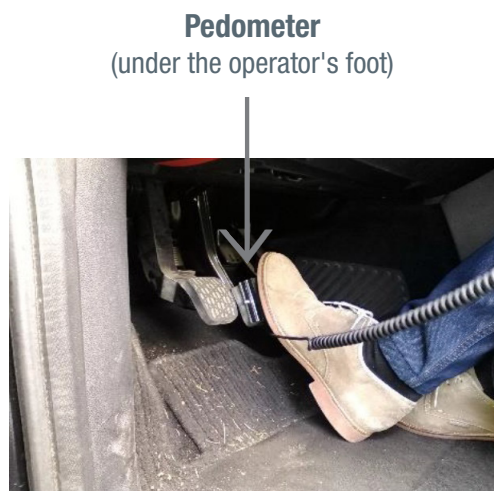
Range AM123230



The "4WD Connect" module connects to the pedal dynamometer and transmits data via Bluetooth.



Bluetooth Module



Pedometer
(under the operator's foot)