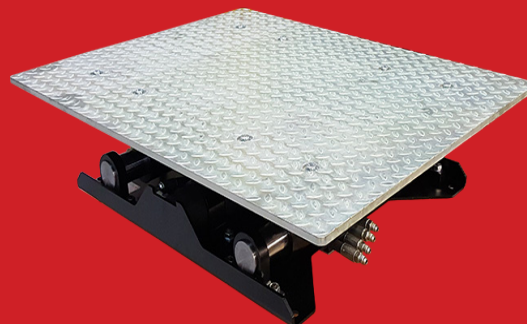
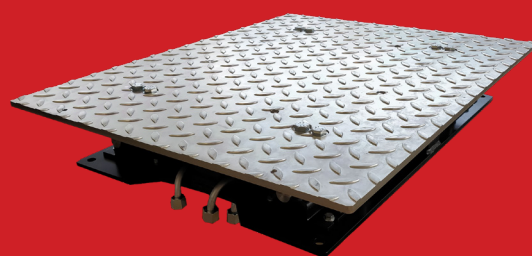


PLAY DETECTORS



AXLE PLAY DETECTOR FOR CAR

Range AM56100 / AM56110 / AM56120



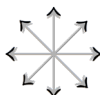
Our hydraulic light vehicle axle play detector apply mechanical stress to the wheel to test the various steering elements and to check on liquid leaks.

Plate movement is controlled according to transverse, longitudinal and diagonal movements by means of a wired control handset fitted with an LED lamp.

The shape of the plates provides a better wheel handling. The electrophoretic coating treatment of all metal parts protects the plates from corrosion.

The plates can be flush-mounted, with civil engineering, or free-standing (access ramps provided). They operate independently of each other.

Mouvements dans les 4 directions (et 8 sens).



CHARACTERISTICS	AM56100-A	AM56110-A
Installation	Recessed	On ground
Axle load	3 t	3 t
Net dimensions per plate	630 x 240 mm	630 x 240 mm
Net dimensions per plate	720 x 550 x 165 mm	720 x 550 x 127 mm
Transverse travel	80 mm	80 mm
Longitudinal travel	80 mm	80 mm
Thrust force	1060 daN	1060 daN
Operating pressure	150 bars	150 bars
Motor power output	2,2 kW	2,2 kW

AXLE PLAY DETECTOR FOR TRUCKS

Range AM56000

In accordance with European Directive 2014/45/EC, MULLER AUTOMOTIVE® Axle play detector plates allow an operator to carry out a visual inspection of the axle component clearances on a vehicle (stub axles, pivots, suspension mountings, joints, bearings, drive axle, etc.).

The axle play detector plates are remotely controlled (wired connection) using a control lamp equipped with switches. The switches control the movement of the plates transversally, longitudinally and as a combination of movements.

CHARACTERISTICS	
Dimensions	865 x 665 mm
Distance between plates	1770 mm
Min./Max. plate track	900 mm / 2630 mm
Min./Max. counter-plate track	1130 mm / 2390 mm
Travel plate weight	190 kg
Rated load per axle	15 T
Max. load per axle	20 T
Unladen thrust force	3000 daN
Fully laden thrust force	2700 daN

