

ELECTRO-HYDRAULIC SCISSOR LIFTS



GALAXIE551ELA

5T BIG SCISSOR LIFT, RECESSED

Our scissor lift GALAXIE551ELA features extra-long runways to raise vehicles under their wheels, with integrated auxiliary scissor lift (hydraulic) for wheel free lifting.

The space-saving configuration recessed in a pit provides upper platforms that are flush mounted with regard to the finished ground, allowing reception of vehicles with low ground clearance.

The lift entirely disappears into the pit at lowest position, providing freedom of movements into the workshop.

This lift provides high accuracy for wheel alignment works, including:

- Front recesses for turntables
- Rear side-slip plates, lockable

- Lifting capacity : 5000 kg
- Lifting capacity, auxiliary lift : 3500 kg
- Lifting/lowering times : 70/50 sec.
- Max. Height (main platforms) : 2060 mm
- Min. Height : 360 mm
- Platforms width : 610 mm
- Main platform length : 5100 mm
- Auxiliary lift platforms, Max. Height : 450 mm
- Auxiliary lift platform, length : 1400-2000 mm

The scissor lift GALAXIE551ELA meets the specific requirements for vehicle inspection activities. A wide range of accessories and options, make it suitable for all kinds of duties (wheel alignment, mechanical works).

SPECIFICATIONS	GALAXIE551ELA
Main lift capacity	5 t
Auxiliary lift capacity	3.5 t
Main platforms length	5100 mm
Oil pressure (main lift)	250 bars
Air pressure	6-8 bars
Power supply	400 V / 3 pH / 50 Hz / 16 A
Motor power	3.5 kW
Net weight	2350 kg
Approval	CE

SPECIFICATIONS	OPTIONS
Turntables for wheel alignment	option
Jacking beam 2.6 or 3T	Ref. 4207520 + ACH.6228000 or TRAV3P
Set of 2 long access ramps for on floor installation	Ref. G5R

RELIABILITY

- All components are tested at the factory. Easy and straightforward installation procedure. Low maintenance requirements.

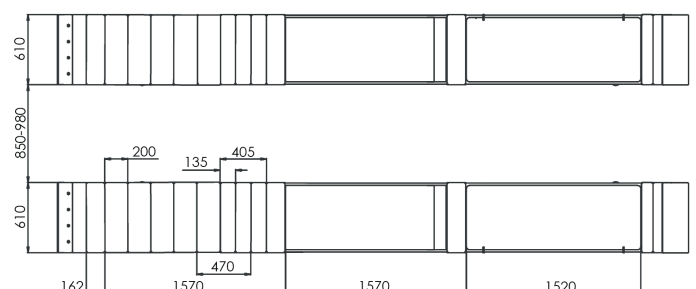
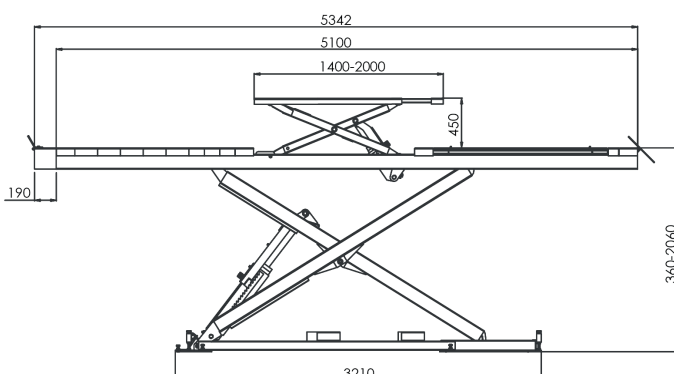
SAFETY

- Automatically activated mechanical latching device, compliant with the European regulations currently in force.
- Hydraulic levelling, monitored by a photocell, without any mechanical connection between the two platforms, enabling convenient access under the lifted vehicle.
- Power unit with user-friendly command unit positioned in an ergonomic way, for a safe and convenient use of the lift.



PERFORMANCE

- Lifting platform length 5,10 m, enabling the reception of most light commercial vehicles, long wheelbase vehicles, sport-Utility vehicles, etc...
- Integrated wheel free hydraulic scissor lifter, totally flush mounted into the main platforms, allowing all kind of technical lifting operation requiring one or more wheels to be removed.
- Lifting kit high performance with 4 LED lights 24V that can be moved and positioned in different ways, to optimize under body lighting.
- Quick raising, sturdy construction.
- Anti-rust measures : High quality paint with sealer applied at metal joints.
- High precision for wheel alignment.



JACKING BEAMS



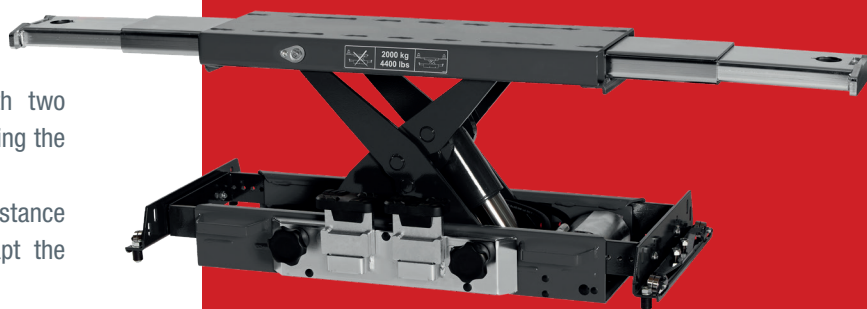
JACKING BEAMS FOR OUR AUTOMOTIVE LIFTS OR FOR WORKSHOP PITS

Ref. 4207420 - 2.0 t
Ref. 4207520 - 2.6 t

- Logic, ergonomic and simple control system with two handles : one for raising/lowering and one for releasing the latching system.
- Extensible lifting arms with adjustable length (distance between the lifting points 780-1610 mm), to adapt the jacking beam to the wheel track of your vehicles.
- Lifting saddles with height extension pieces +10 , +45 and +90 mm as standard delivery.
- Lifting capacity: 2,0 t or 2,6 t (depending on the model).
- Lifting points: 2
- Air supply: 8 to 12 bar
- Max. Lifting height: 250 mm
- Min. Lifting height: 180 mm

For installation in workshop pit:

- Min. pit width: 780 mm*
- Max. pit width: 1180 mm*



UNIVERSAL AND INDISPENSABLE
SOLUTION FOR JACKING UNDER
AXLE.

JACKING BEAMS

Ref. 4207420 - 2.0 t

Ref. 4207520 - 2.6 t

This jacking beam is designed to raise wheel free under one axle a vehicle placed on an automotive lift or a workshop pit.

Air supplied, with hydro-pneumatic pump, those jacking beams feature a hydraulic lifting cylinder, and a manually released latching device, which goes automatically in locking position when the operator releases the control handle. An hydraulic max. pressure valve prevents any overloading.

Full safety of use is provided by the lowering control, requiring the two hands of the operator to activate the handles. Controls are « hold to run » type.

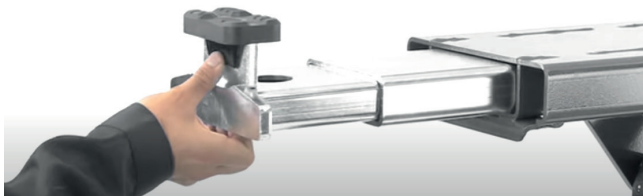


CORRECT ADAPTATION TO THE PIT WIDTH / TO THE AUTOMOTIVE LIFT

By the mean of a wide choice of possible optional support arms to be fitted at the sides of the jacking beam, the jacking beam can be ideally adapted to workshop pits and those automotive lifts that are equipped with supporting rails for jacking beam.

Equipped with a mechanical locking device, the jacking beam is delivered as standard with lifting accessories which allows for a perfect positioning of the two jacking points under the vehicle :

2 removable rubber lifting saddle (height 10 mm) and 2 height extender (45 and 90 mm)



SPECIFICATIONS	4207420	4207520
Lifting capacity	2,0 t	2,6 t
Net weight	110 kg	110 kg
Supply air pressure	8 - 12 bars	8 - 12 bars
Min. lifting points distance	780 mm	780 mm
Max. lifting points distance	1610 mm	1610 mm
Jacking beam min. width (without support arms)	780 mm	780 mm
Jacking beam max. width (without support arms)	1180 mm	1180 mm
Max. lifting height	250 mm	250 mm
Kit 2x support arms for guiding rails	Large choice, adapted to different pits or lifts	

* Please always buy a correct kit of 2x support arms in addition to the jacking beam. Our jacking beams are delivered without support arms.

We help you to determine your correct kit of 2x support arms by sending you a standardized drawing to be filled-in with the dimensions of your pit.